

LIQUID LEVEL GAUGES

8800 SERIES BULK TANK GAUGE WITH 90° CONNECTIONS



APPLICATIONS:

For low to medium pressure applications up to 500 psig, including oil or fuel storage tanks, cooling tower water tanks, and boiler feedwater tanks.

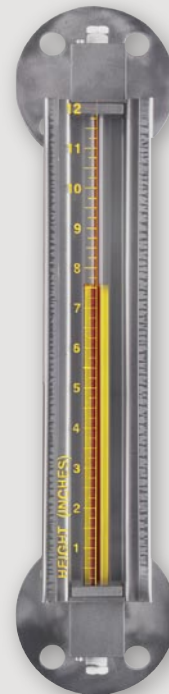
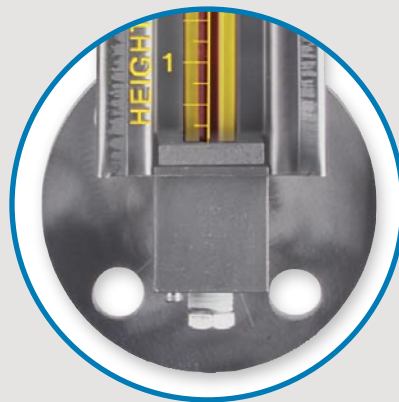
FEATURES

The 8800 Series Level Gauge features 90° connections for ease of installation. The Gauge is fitted with inline 1/4" FNPT vent and drain connections. Vent and drain connections are inline for routine maintenance of the level gauge.

The centerline dimensional tolerance is $\pm 1/16"$. This assures that the gauge will fit the mounting connection of the tank.

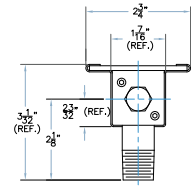
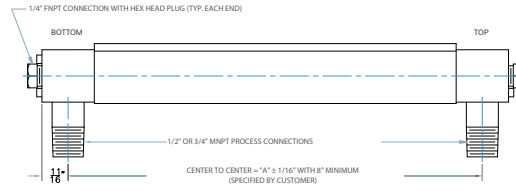
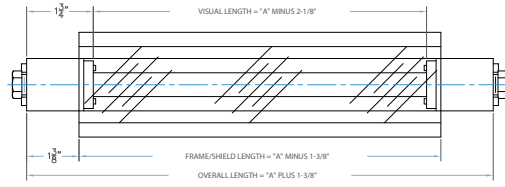
The sight tube of the 8800 Series Level Gauge is totally protected. Three sides of the gauge are enclosed with a metal frame, while the face of the gauge is protected with a polycarbonate shield. This shield can be custom calibrated to read tank volume or any other calibration. Refer to the Shield Specifications page (pg 12) to see the assortment of standard shield options.

The gauge frame is available in carbon steel or 304 stainless steel. A wide variety of wetted materials are available, including carbon steel, 316 stainless steel, alloy 20, Hastelloy C-276, PVC, CPVC, Kynar, and high density polyethylene.

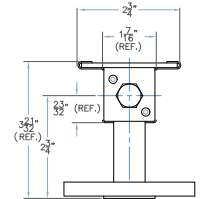
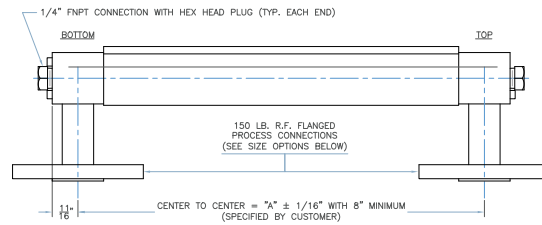
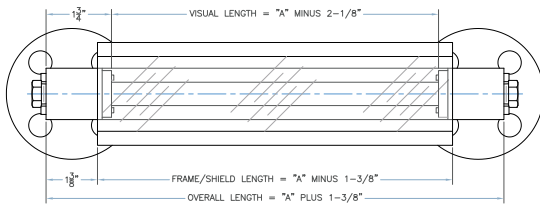


8800 Bulk Tank Gauge with Optional Flange Connection

8800 SERIES LEVEL GAUGE WITH THREADED PROCESS CONNECTIONS



8800 SERIES LEVEL GAUGE W/ OPTIONAL FLANGE CONNECTIONS



ORDERING SYSTEM 8800 Series Level Gauge

COMPANY: _____ CITY: _____ STATE: _____ ZIP: _____

REQUESTED BY: _____ PHONE: _____ FAX: _____

ADDRESS: _____ EMAIL: _____

88

Gauge Style

88=Gauge with 90° Connections

Process Connections

M50=1/2" MNPT
M75=3/4" MNPT
F50=1/2" FNPT
F75=3/4" FNPT
FL50=1/2" FLANGE
FL75=3/4" FLANGE
FL1.0=1" FLANGE
FL1.5=1.5" FLANGE
FL2.0=2" FLANGE

Center to Center Dimension (inches)

Material of Construction

C=Zinc Plated Carbon Steel
A=Stainless Steel
PC=PVC Wetted Parts w/Carbon Steel Frame
PS=PVC Wetted Parts w/Stainless Steel Frame
Other (Please Specify)

Seal Material

V=Fluorocarbon
A=Aflas
B=Buna-N
T=FEP Encapsulated Silicone
E=Ethylene Propylene

Shield Options*

L=Clear Polycarbonate
H=Height Scale
RH=Rate Height Scale
MH=Metric Height Scale
MRH=Metric Rate Height Scale
M=Expanded Metal Guard

Sight Tube Options**

GS=5/8" O.D. Glass (STANDARD)
RL=5/8" O.D. Redline Glass

Maximum Working Pressure (PSIG)

Maximum Operating Temperature (°F)

Steam

S=Steam Application
NS=Non-Steam Application

* See page 12 for shield descriptions

** Based on application data provided, Kenco will select the appropriate sight tube material, i.e. high pressure glass.