

## 3/4" Increased Sensitivity Regulator

**Model 20495**

### Features

- ▶ Original Shear-Seal® technology
- ▶ Fail-safe motor control options
- ▶ Sensitive down to 200 psi
- ▶ High flow capacity
- ▶ Tolerates contaminated media
- ▶ Self venting

### Applications

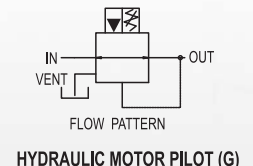
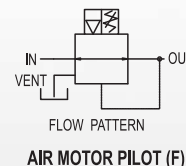
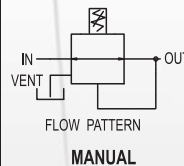
- ▶ Coiled tube reels
- ▶ BOP control units
- ▶ Wireline service tractors
- ▶ Pressure sensitive applications



### General Specifications\*

<b>Pressure:</b>	
Supply/Inlet Pressure:	5,000 psi (345 bar) max
Working Pressure:	3,000 psi (207 bar)
Regulated Pressure Range (manual):	300-2700 psi (21 - 186 bar)
Regulated Pressure (failsafe motor):	400-2400 psi (28 - 165 bar)
Fluid Temperature Range:	-40° to +250°F (-40° to +121°C)
Proof Pressure:	7,500 psi (520 bar)
<b>Flow:</b>	
Flow Rate:	70 GPM
Outlet Cv:	9.8
Vent Cv:	0.6
<b>Porting:</b>	
Inlet:	1" NPT
Outlet (regulated):	1" NPT
Vent:	1/2" NPT
Gauge Port:	3/8" NPT
<b>Materials of Construction:</b>	
Body:	Stainless steel
Flanges:	Phosphate coated alloy steel (stainless steel optional)
Housing:	Phosphate coated alloy steel

<b>Materials of Construction (cont.):</b>	
Standard O'Ring material:	Buna N
Socket Head Screws:	Zinc plated alloy steel (stainless steel optional)
Wetted Parts:	Stainless steel
<b>Pneumatic Pilot Motor ("F" prefix):</b>	
Pilot Motor Working Pressure:	80 - 100 psi (5.5-6.9 bar)
Porting:	1/4" NPT
Operating Temperature Range:	-40°-220°F (4°-104°C)
<b>Hydraulic Pilot Motor ("G" prefix):</b>	
Pilot Motor Working Pressure:	400 - 1650 psi (27.5 - 114 bar)
Porting:	SAE for 3/8" Tube (Size 6)
Temperature Rating:	-40° to +150°F (-40° to +66°C)
<b>Approximate Shipping Weights:</b>	
Manual:	47 lbs. (21.3 kg)
Air or Hydraulic Failsafe:	70 lbs. (31.8kg)

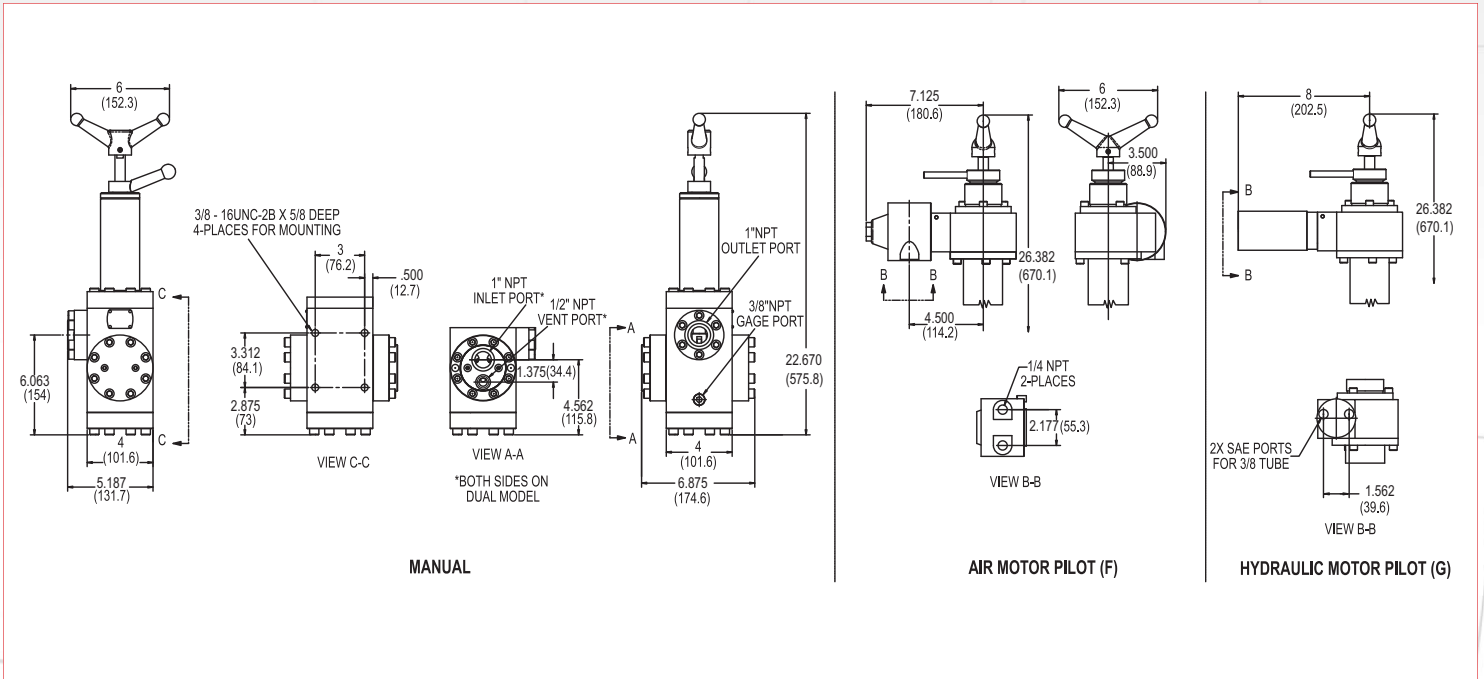


\* See product configurator for additional options.

# 3/4" Increased Sensitivity Regulator

## Model 20495

### Technical Drawings



### Product Configurator

Example: 20495S3WQ2

#### Adjustment Method

	Manual
F	Pneumatic failsafe motor
G	Hydraulic failsafe motor

#### Series

20495S3WQ2 High-sensitivity regulator