

OFFSET VALVES

TYPE 1S & 1U

SCREWED BONNET

TYPE 2S & 2U

UNION REPLACEABLE SEAT

4000 psig CWP 6000 psig Test

3/4" NPT Male Union Tank Connection

1/2" NPT Female Gage Connection

1/2" NPT Female Drain Connection

Glass-Trac Type 1 & 2 Offset Gage Valves are available with screwed (S), union (U), (illustrated below) and tubular (T) gage connections (Page 15). Both 1 and 2 Valves are used with Reflex and Transparent Gages in working pressures up to 4000 psi and with Tubular Gages to their maximum rating. The Teflon packing ring is standard and used in services up to 450° F. For temperatures to 700° F, valves are fitted with special wire graphite packing. Both valves have stainless steel ball checks to shut off the flow automatically in case of gage glass breakage.

The "offset" feature permits easy cleaning of gages. A floating tailpiece on Type 1 valves permits an overall vertical adjustment of 1/8" if the gage center-to-centers are not precisely located. Installation is quicker and gage strain is eliminated.

Type 2 Valves have an optional backseating stem allowing the packing to be changed without shutting down the vessel.

PRESSURE - TEMPERATURE RATING			
Teflon Packing		Wire-Graphite Packing	
4000 psi	100° F	2950 psi	500° F
3730 psi	200° F	2700 psi	600° F
3470 psi	300° F	2430 psi	700° F
3200 psi	400° F		

PARTS

ITEM NO	NAME	STANDARD	316 SS WETTED PARTS
		MATERIAL	MATERIAL
1	BODY	CARBON STEEL	316 SS
2	UNION NUT	CARBON STEEL	CARBON STEEL
3	PACKING NUT	CARBON STEEL	CARBON STEEL
4	PACKING FOLLOWER	316 SS	316 SS
5	PACKING RING	TEFLON	TEFLON
6	PACKING WASHER	17-4 PH SS	17-4 PH SS
7	STEM	416 SS	316 SS
8	STEM NUT	CARBON STEEL	CARBON STEEL
9	NAME PLATE	304 SS	304 SS
10	HAND WHEEL	IRON	IRON

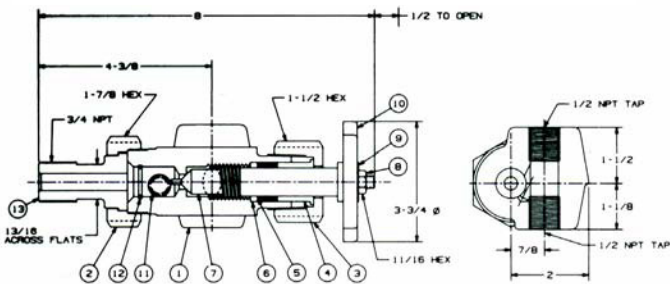
ITEM NO	NAME	STANDARD	316 SS WETTED PARTS
		MATERIAL	MATERIAL
11	BALL	440 SS	316 SS
12	BALL RETAINER	316 SS	316 SS
13	MALE CONNECTOR	CARBON STEEL	316 SS
14	BONNET	416 SS	316 SS
15	SEAT	416 SS	316 SS
17	FEMALE CONNECTOR	CARBON STEEL	316 SS

*Item No. 13 has hole with 1/16 eccentricity for ± 1/8 maximum misalignment on the overall center-to-center.
Note: Valve shown is for bottom left hand (or top right hand) location. Opposite hand is reversed. Valves are furnished in pairs of one bottom left hand and one top left hand.

Note: 316 SS wetted parts not available in Type 1 valves.

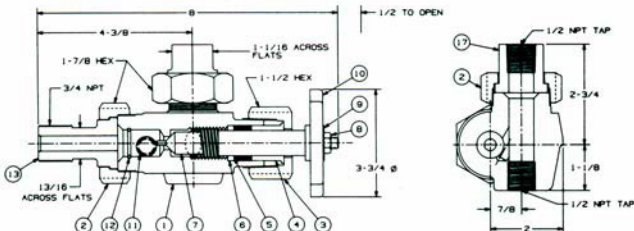
Type 1S

Weight per set approximately 10 lbs. 6ozs.



Type 1U

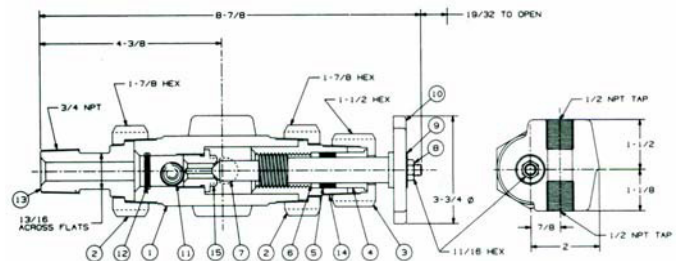
Weight per set approximately 11 lbs. 6 ozs.



Type 1T Tubular Gage Valve shown on page 15. Optional Gage Connections shown on page 25. Optional Tank Connections shown on pages 26 and 27.

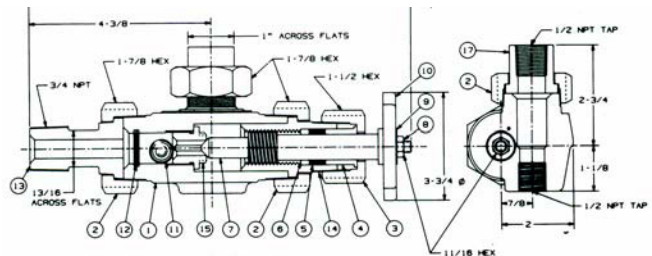
Type 2S

Weight per set approximately 11 lbs. 6 ozs.



Type 2U

Weight per set approximately 12 lbs. 6 ozs.



Type 2T Tubular Gage Valve shown on page 15. Optional Gage Connections shown on page 25. Optional Tank Connections shown on pages 26 and 27. Optional Quick Opening Valve shown on page 24.